

# Committee on Fibre Measurement

# RICE Scheme

Regular Interlaboratory Counting Exchanges  
(Quality Control of Asbestos Fibre Counting)

## CLASSIFICATION OF LABORATORY PERFORMANCE

Laboratory N<sup>o</sup>: **1367**

Period: **19 Oct 2016 to 05 Nov 2017**

Rounds: **104 - 107**

Laboratory: **Scientific Services Ltd (Cornwall)**  
**The Fuel Depot**  
**Scorrier**  
**Redruth**  
**Cornwall**  
**TR16 5UT**  
**UK**

Classification: **Category 1 (Satisfactory)**

No. of Batches **4**

### Notes

- 1 The RICE scheme tests proficiency in the use of the optical microscopy method of counting asbestos fibres as described in the Health and Safety Executive publication HSG248.
- 2 The classifications will be updated after each subsequent round i.e. at 3 - 4 month intervals.
- 3 Laboratories which have completed fewer than four rounds are normally classified as AWAITING CLASSIFICATION. On completion of four rounds laboratories are classified with the performance category (CATEGORY 1, CATEGORY 2 or CATEGORY 3). Category 1 represents GOOD performance, Category 2 is ACCEPTABLE (but needs improvement), while category 3 is UNSATISFACTORY performance.

Signature: Melanie Clunas  
RICE Coordinator



**Committee on Fibre Measurement**  
Regular Interlaboratory Counting Exchanges

**RICE**

Summary of Laboratory Results  
**Rounds 104 - 107**

Laboratory: <b>1367</b> <b>Scientific Services Ltd (Cornwall), TR16 5UT, UK</b>				Number ( <i>and percentage</i> ) of counts in performance bands				
Round	Group	Batch	Evaluation date	Band A	Band A & Band B	Band -C	Band +C	
107	13	30	5 Nov 2017	7	8	0	0	
				88%	100%	0%	0%	
106	30	31	6 Jun 2017	8	8	0	0	
				100%	100%	0%	0%	
105	32	38	13 Mar 2017	7	8	0	0	
				88%	100%	0%	0%	
104	32	39	19 Oct 2016	5	7	0	1	
				62%	88%	0%	12%	
Four-round average percentages				84%	96%	0%	3%	
<b>Category 1</b>								
Categories from previous rounds				Round	R107 B30	R106 B31	R105 B38	R104 B39
				Category	1	1	1	1

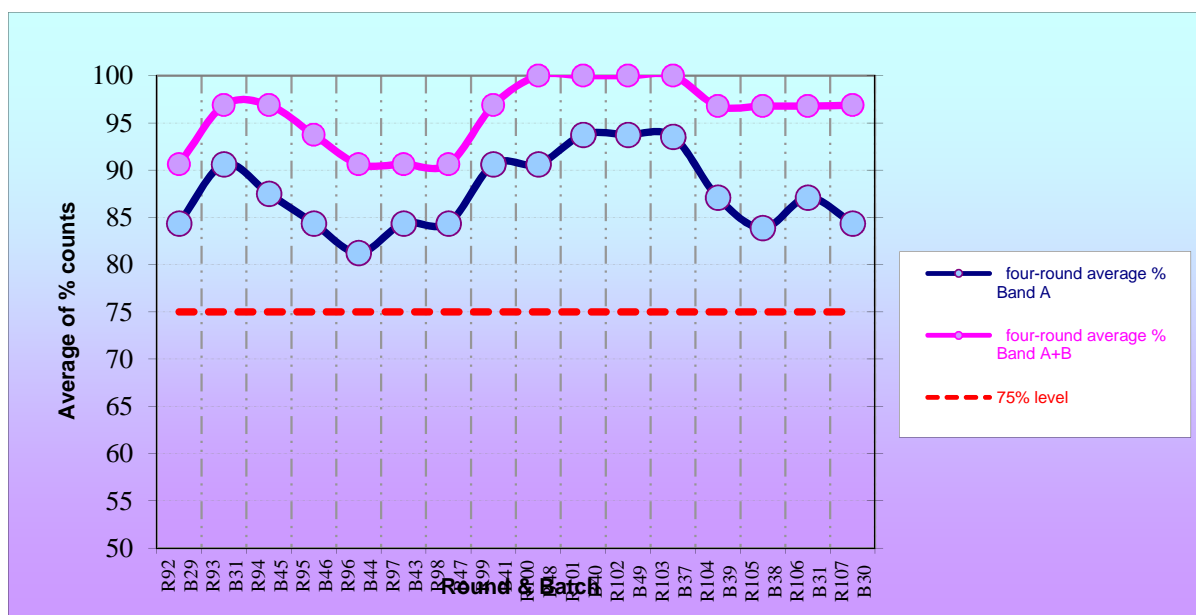
**Calculation of Category**

In routine cases, if the four-round average percentage of counts in Band A is 75% or more, the category is 1; failing that, if the average of counts in Bands A and B combined is 75% or more, the category is 2; otherwise the category is 3.

The category may be subject to review (e.g. if one of the four rounds was missed or if an extra batch of samples was evaluated).

Full details on the assessment of categories, and on the formal performance classifications, are given in the document "*RICE Information for Participants*".





<u>This laboratory</u>	
Current four-round average percentage of A counts	84%
Current four-round average percentage of A + B counts	96%

The plot shown above is a representation of your laboratory's counting performance during the last several rounds of the RICE Scheme.

The lower line is the percentage of counts inside the INNER limits (*i.e.* those achieving a "Band A" mark), as a running average over four consecutive rounds. The upper line is the four-round running average of counts inside the OUTER limits (those counts in Bands A or B).

**When both lines are on or above the 75 percent level, the laboratory is Category 1.**

**When one line is on or above the 75 percent level and the other line below, the laboratory is Category 2.**

**When both lines are below the 75 percent level, the laboratory is Category 3.**

This plot may be used to help assess the standard and trends of your laboratory's recent counting performance. Category 1 is regarded as "good" performance. Category 2, although still "satisfactory" means that improvement should be sought. Category 3 should always be considered unsatisfactory performance and you should act urgently to remedy this.

Take account of any recent trends in the plotted lines: for example, a steep drop in performance would be better investigated while the laboratory is still above the 75% level. Remember also that these are four-round averages, so there is likely to be a delay before an improvement or deterioration becomes obvious.

*(Note that the percentages given in this report have been rounded down and do not take account of the arrangements for assessing the categories of laboratories with missing rounds, extra rounds, or other special provisions as described in the "RICE Information for Participants").*

# Committee on Fibre Measurement

## Regular Interlaboratory Counting Exchanges

# RICE

This report shows the most recent values for the slides seen by your laboratory during recent RICE rounds. It includes results from the current round.

The results for your laboratory are highlighted: your category "C" results are shown in red italics and your category "B" results in grey italics.

### Recent Results For Slides Seen By Laboratory 1367: Round 107: Batch 30

Slide Number	Reference Value	Recent Participant Values							
30.01	10.70	12.10	8.28	7.32	6.40	15.60	9.60	5.10	6.05
		<i>11.80</i>	7.32	8.30	12.40	9.40	6.40	7.64	8.28
30.02	63.70	63.70	85.50	81.14	48.40	99.50	70.30	81.60	54.45
		<i>61.10</i>	91.65	75.20	97.20	90.50	83.40	48.40	49.68
30.03	54.80	74.50	65.33	63.38	68.40	63.70	56.40	54.10	60.50
		<i>37.80</i>	58.28	64.30	62.40	64.90	60.20	57.32	57.96
30.06	316.97	398.10	254.78	252.33	403.90	344.30	338.60	317.00	289.50
		<i>353.90</i>	249.78	299.70	283.10	385.80	312.10	303.30	310.70
30.07	8.53	8.30	4.14	3.18	6.70	6.10	7.60	4.50	3.50
		<i>9.20</i>	3.82	2.20	7.60	5.20	4.50	4.14	3.82
30.10	77.21	95.50	60.83	67.34	49.40	102.70	110.80	91.00	66.69
		<i>49.40</i>	59.24	76.40	103.60	75.00	94.40	67.04	68.48
30.11	28.19	39.50	33.76	29.62	34.50	41.40	45.90	21.00	40.12
		<i>14.00</i>	24.84	27.40	38.50	45.50	29.60	36.30	34.39
30.12	65.20	68.80	63.38	57.01	101.20	82.70	73.20	67.40	80.62
		<i>46.20</i>	53.18	69.60	70.80	88.70	60.50	77.67	78.63

# Committee on Fibre Measurement

## Regular Interlaboratory Counting Exchanges

# RICE

Laboratory: 1367, record of analysts submitting results

### Round 107, Batch 30

Analyst (initials)	N°. of results submitted
AN	2
AO	2
CD	3
RW	2
SD	3

### Round 106, Batch 31

Analyst (initials)	N°. of results submitted
AN	3
CD	3
CG	3
SD	3

### Round 105, Batch 38

Analyst (initials)	N°. of results submitted
AN	3
CD	3
CG	3
SD	3

### Round 104, Batch 39

Analyst (initials)	N°. of results submitted
AN	3
CG	3
SD	3
TH	3